



Gun DepthLink | An Industry Standard Gun Depth Acquisition and QC System



- 16 channel input for the largest configurations.
- Formatted RS232 output data string in Reftek™ format (other formats available on request).
- Directly compatible with Seamap™ as well as industry standard Gun Depth Transducers.
- Front to back two point linear system calibration.
- Standard 19" rack mounting configuration.

The Gun Depth Link provides the interface and link between the in sea gun depth transducers and the onboard recording systems.

The system provides the power to the in sea gun depth transducer and interfaces to the frequency modulated returned signal. This signal is cleaned and interpreted into the depth of the transducer itself.

The system provides up to 16 channels of data input which can be positioned by software into any of the 64 placeholders defined in the Reftek™ Format. The acquisition unit allows for a two point front to back calibration. By zeroing the units at atmospheric pressure and then applying a known calibrated pressure to the transducer, the zero offset and slope correction factors can be applied for the whole front to back system for that channel.

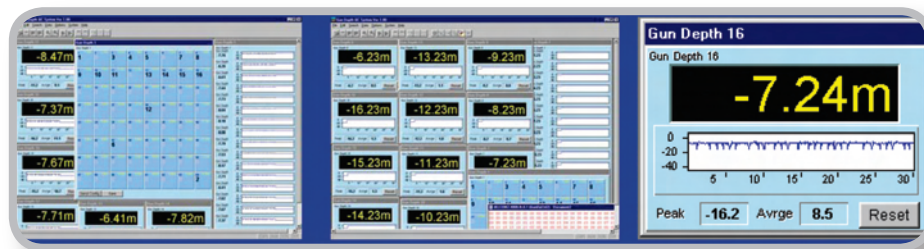
The unit is supplied in a standard 19" rack mount enclosure.

Connection to the unit is made via universally available D25 connectors, so interfacing this unit to the depth transducers should be simple and inexpensive. 8 Channels are input on each of the two D 25 inputs labeled Port and Starboard for your convenience.

Data from the unit is output via 9 pin RS232 connections in the industry standard Reftek™ format upon polling by the recording system. Should other formats or modes of operation be required please ask.

As an option a separate PC based QC system can be provided which allows graphical display of gun depth data, history, alarms and control of the acquisition system and data.

Optional QC System Screen Shots



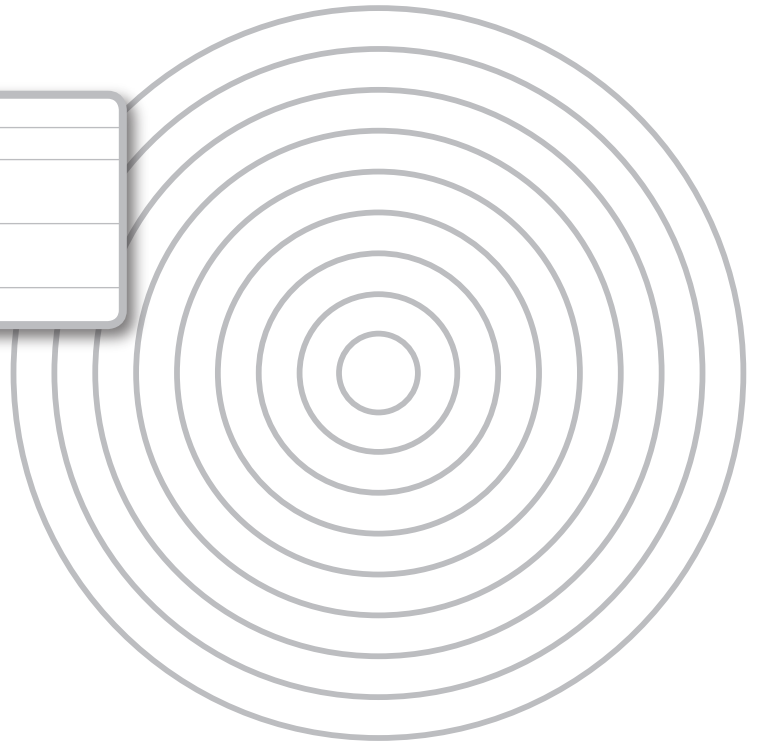
Gun DepthLink

Specifications

Gun Depth Link	
No. of Channels	16
Reftek™ standard data output	RS232
Connector	9 Pin D connector
Optional Gun Depth Link QC Connection	
Type	RS232
Connector	9 Pin D connector
Input power	110/220 volts 50/60 Hz AC
Format	Standard 19" rack mounted
Display	4 x 20 Character LCD
System Compatibility	Any software system capable of receiving RS 232 data in "Reftek" format (ex. External Header)
Gun Depth Optional QC System	
Depth History Display, Alarms, Graphical User Interface	
Full graphical remote control of Gun Depth Link	
Standard Microsoft Windows™ User Interface	
Seamap Standard PC	

Ordering Information

Description	Part Number
Gun Depth Acquisition System	01-19-0401
Gun Depth Optional QC System	01-19-0402



Seamap Inc.

PO Box 1175, Huntsville, TX. 77342
United States of America
Tel : +1 936 291 2277
Fax : +1 936 295 1922
Email : info-usa@seamap.com

Seamap (UK) Ltd.

Unit 34, The Maltings, Charlton Estate
Shepton Mallet, Somerset, BA4 5QE, UK
Tel : +44 [0] 174 934 2223
Fax : +44 [0] 174 934 7588
Email : info-uk@seamap.com

Seamap Pte Ltd.

51 Changi North Crescent
Singapore 499626
Tel : +65 6545 1054
Fax : +65 6545 0585
Email : info-asia@seamap.com